



Performance Plate, Beyond Decoration



DEBO China

2806, Block B,
Xintian Century Commercial
Plaza, Futian District,
Shenzhen, China PRC
518017

T: +86-755-2982 2199
F: +86-755-2982 2012
E: sales@risewell.cn

DEBO Europe

Hogefilterweg 474,
3063 KJ Rotterdam,
The Netherlands.

T: +31-10-4522 790
E: europe@risewell.cn

Production Base

NO. 3, Pusha South Rd,
Tangxia Town, Dongguan,
Guangdong, China
523725

No. 28, Changhong East Road,
Wujin District, Changzhou City,
Jiangsu Province, China
213100



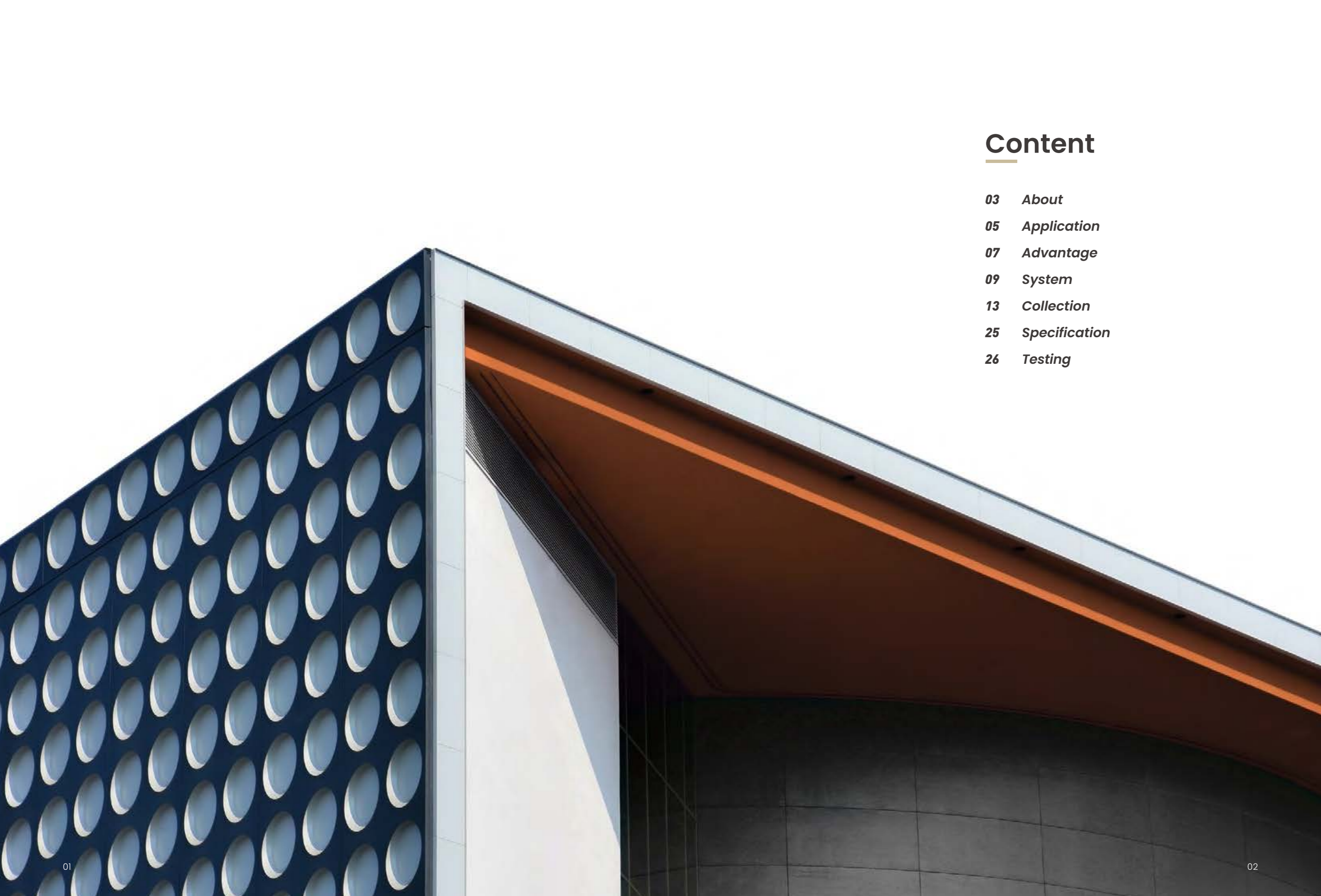
Website



WeChat

DEBO® HUWAI-HPL™ Compact HPL For Exterior Wall Paneling

Anti-UV | Weather-resistant | Easy to maintain



Content

- 03** *About*
- 05** *Application*
- 07** *Advantage*
- 09** *System*
- 13** *Collection*
- 25** *Specification*
- 26** *Testing*

About

Modern architecture seeks not only practicality, but also artistic value. DEBO® (DEcorative BOards) was founded in 2004 and has been committing to providing architects, designers, builders and end users around the world with comfort, reliability and sources creation since its inception.

DEBO® provides an all-in-one solution for building facades. We offer a wide range of decors, patterns and surface designs to cater for diverse, unique and attractive facade styling. Using DEBO® HUWAI-HPL™ Compact Exterior HPL panel to protect and decorate building facade wall in all aspects, it is feasibly adaptable to high or low temperatures, and is significantly resistant to climate change, UV light, water and stain. In addition, the systems are well designed to ensure quick and easy installation, structural stability and easy maintenance for long performance life.



Long Lasting

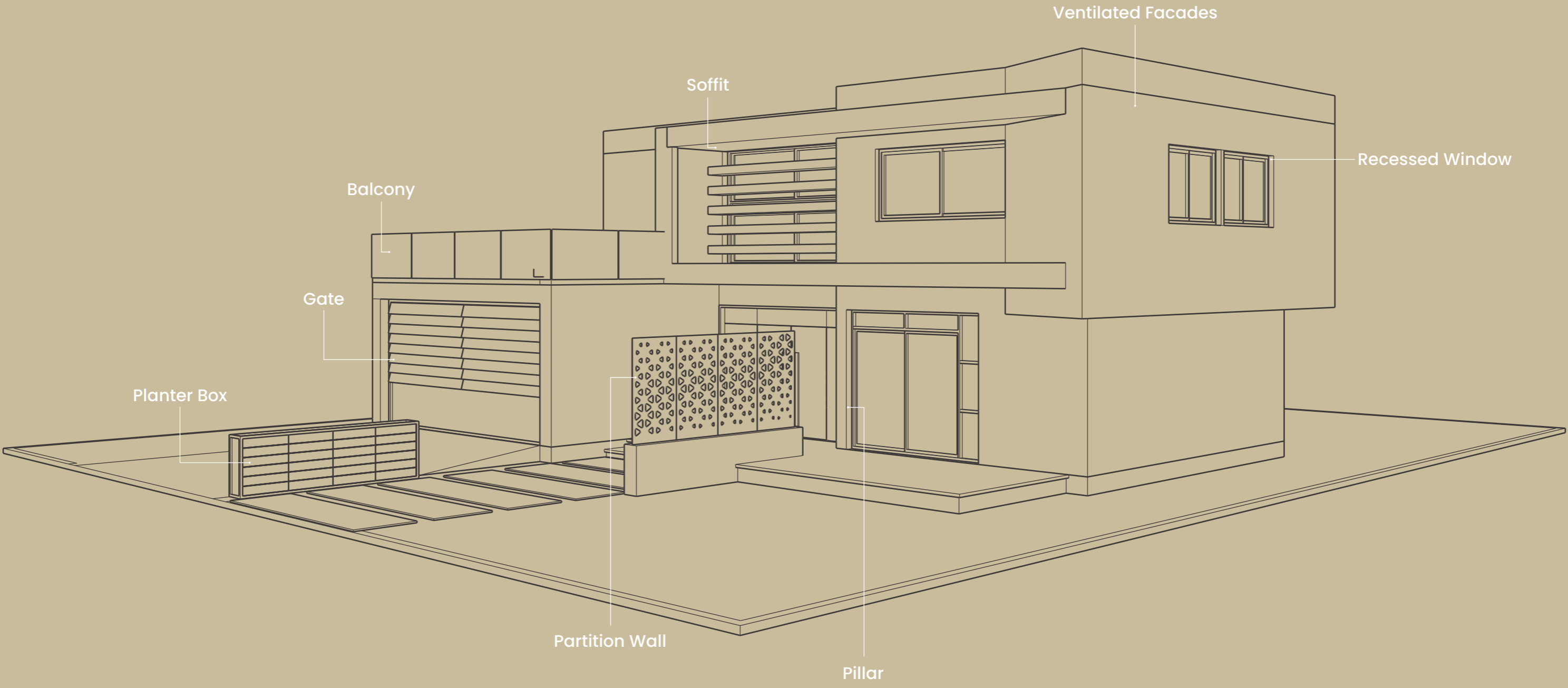


Inspiring Space



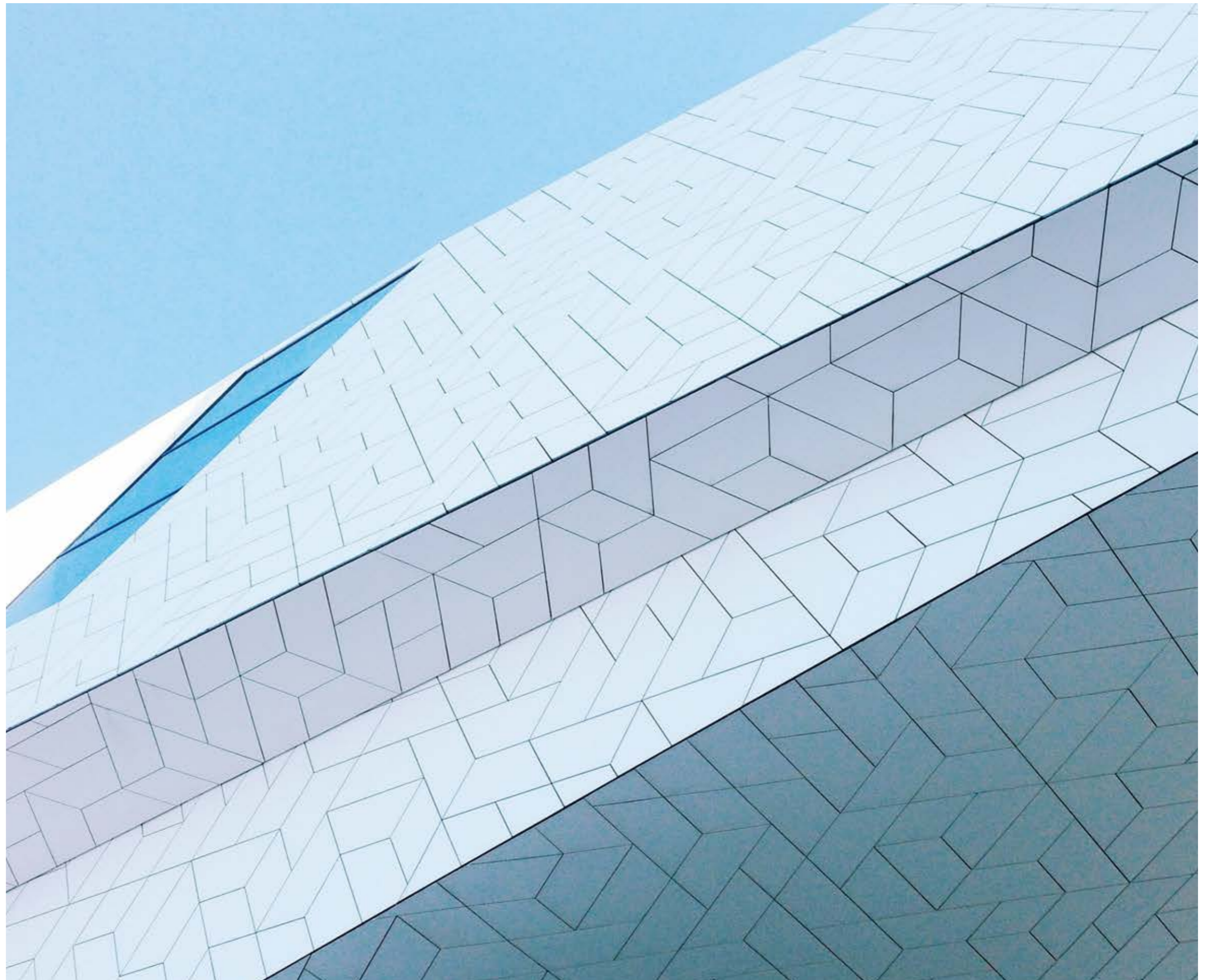
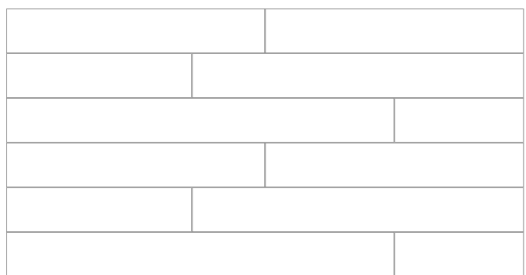
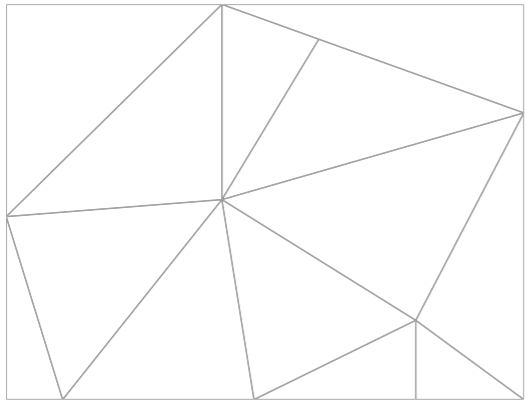
Free Maintenance

Application



Advantage

- ▶ Rich finish style
- ▶ Long-term colorfast
- ▶ Anti-UV, resistant to climate change and chemical corrosion
- ▶ Low maintenance cost and easy to clean
- ▶ Resistant to scratches, impacts and graffiti
- ▶ Flexible structure
 - Unconventional Structure
 - Striped Structure



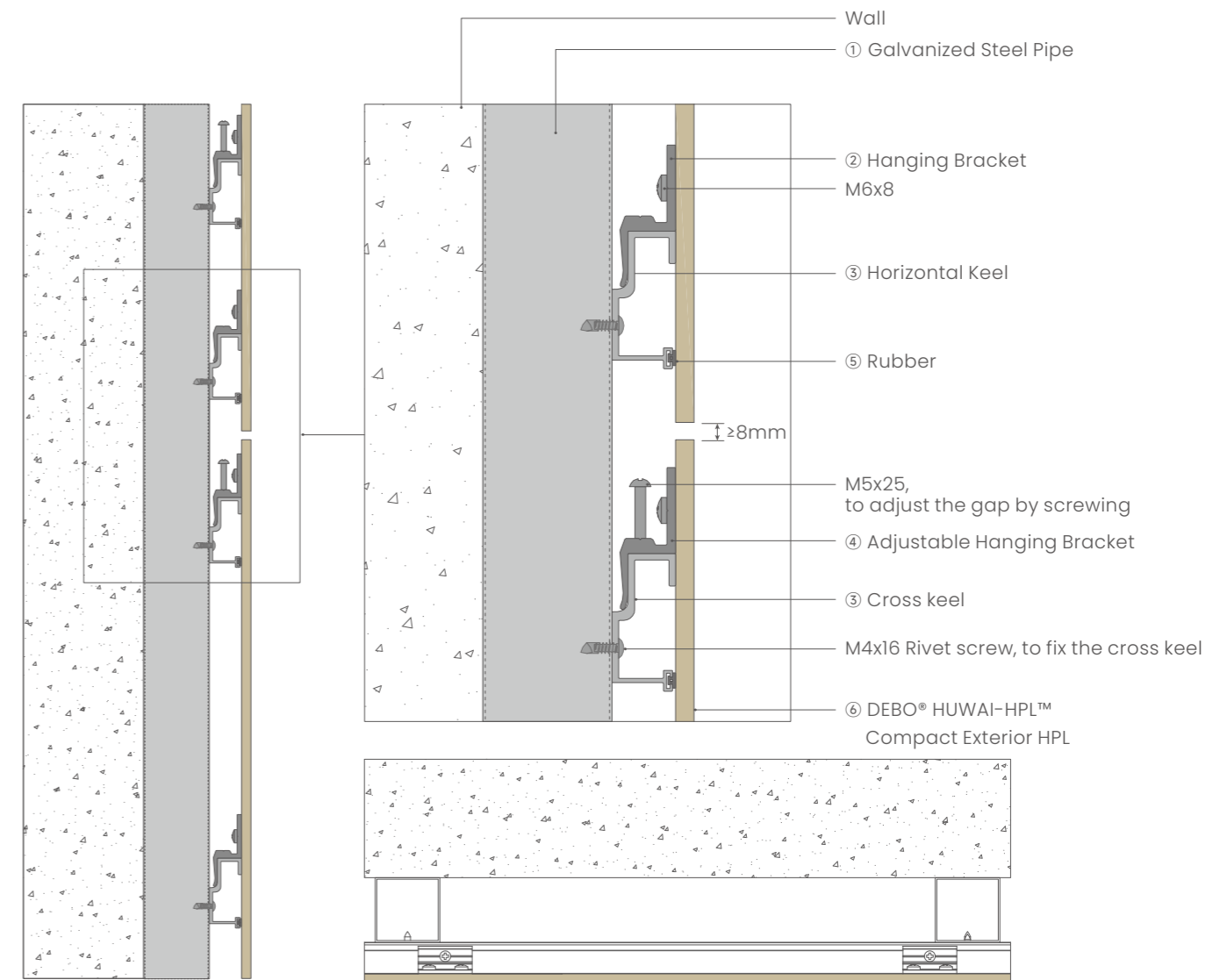
System

S8 Dry-hanging



Note

Since the panels comply with the law of "thermal expansion and contraction" in the outdoor environment, it is most appropriate to control the gap between the panels at 8 mm or more.



Side view

Top view

① Galvanized Steel Pipe

Wall reinforcement structure, not part of the system's product range.

② Hanging Bracket

No up and down adjustment function, mainly used for panel fixing by screws (6x8mm).

③ Horizontal Keel

Mainly used for fixing panels in horizontal direction.

④ Adjustable Hanging Bracket

Mainly used for adjusting the gap between upper and lower wall panels, fixed by screws M5x25.

⑤ Rubber

Mainly used for sound dissipation and cushioning, and fastening wall panels.

⑥ DEBO® HUWAI-HPL™ Compact Exterior HPL

The recommended thickness of the panel for Dry-hanging System is 8mm. Referring to DEBO® color collection to get more colors.

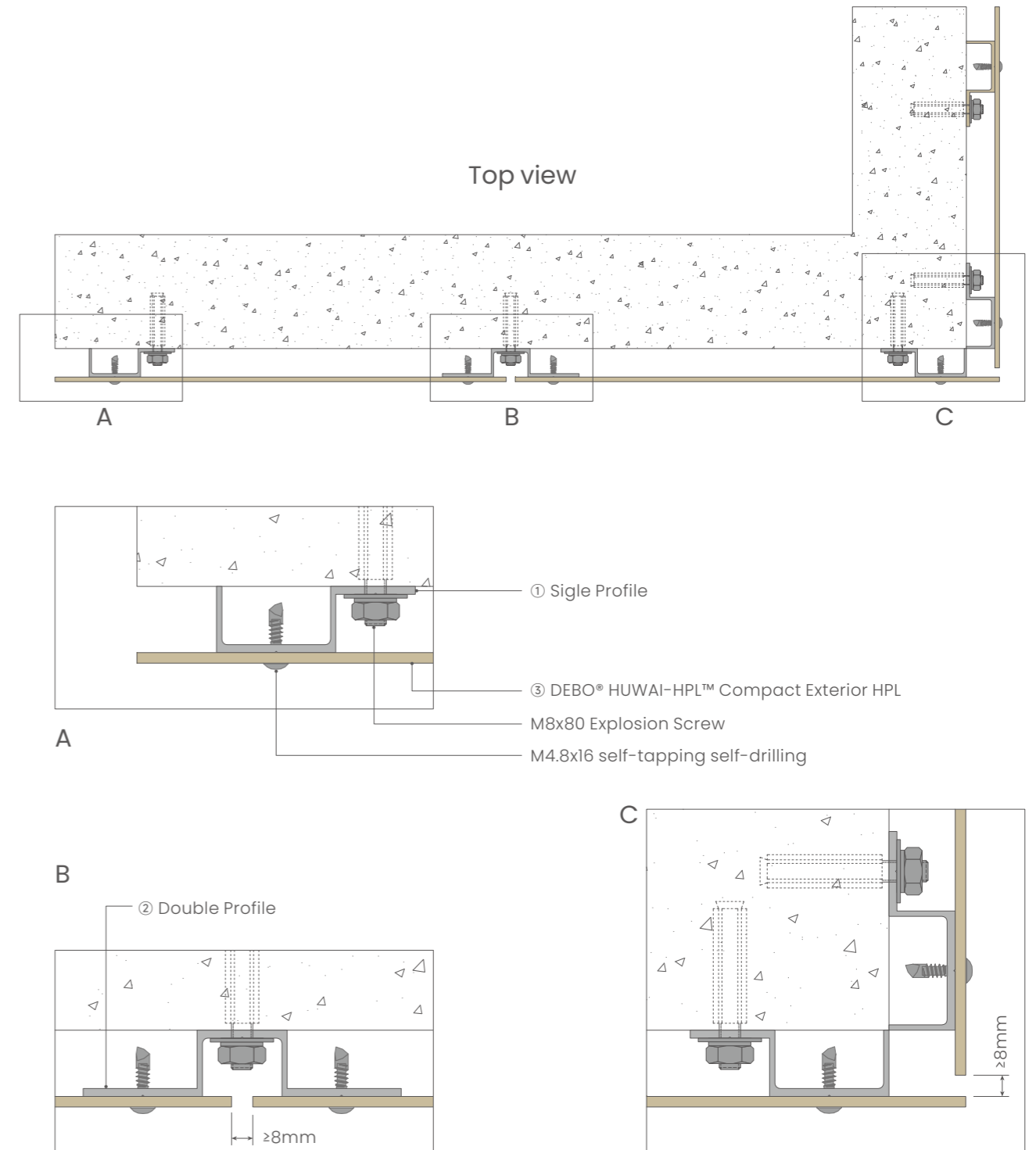
System

S6 Screw-nailing



Note

Since the panels comply with the law of "thermal expansion and contraction" in the outdoor environment, it is most appropriate to control the gap between the panels at 8 mm or more.



① Single Profile

Vertical keel, mainly used for corner and edge closing.

② Double Profile

Vertical keel, mainly used for horizontal splicing of panels.

③ DEBO® HUWAI-HPL™ Compact Exterior HPL

The recommended thickness of the panel for Screw-nailing System is 6mm. Referring to DEBO® color collection to get more colors.

Collection

DEBO® HUWAI-HPL™ Compact Exterior Design Decor

DEBO® HUWAI-HPL™ Compact Exterior Design Decor, also known as "Exterior Solid Core Phenolic Sheet", with core density $\geq 1350\text{kg/m}^3$, is a building decorative material dedicated to outdoor environment and can adapt to various weather conditions for a long time. Its excellent performance, various color and surface texture make it a trendy choice for modern architectural wall curtains and outdoor furniture. It is widely used in exterior facade, countertop, parapet, balcony, amusement facilities and so on.



Anti-UV
Longlasting



Climate
Resistant



Impact
Resistant



Strong
Surface



Free
Maintenance



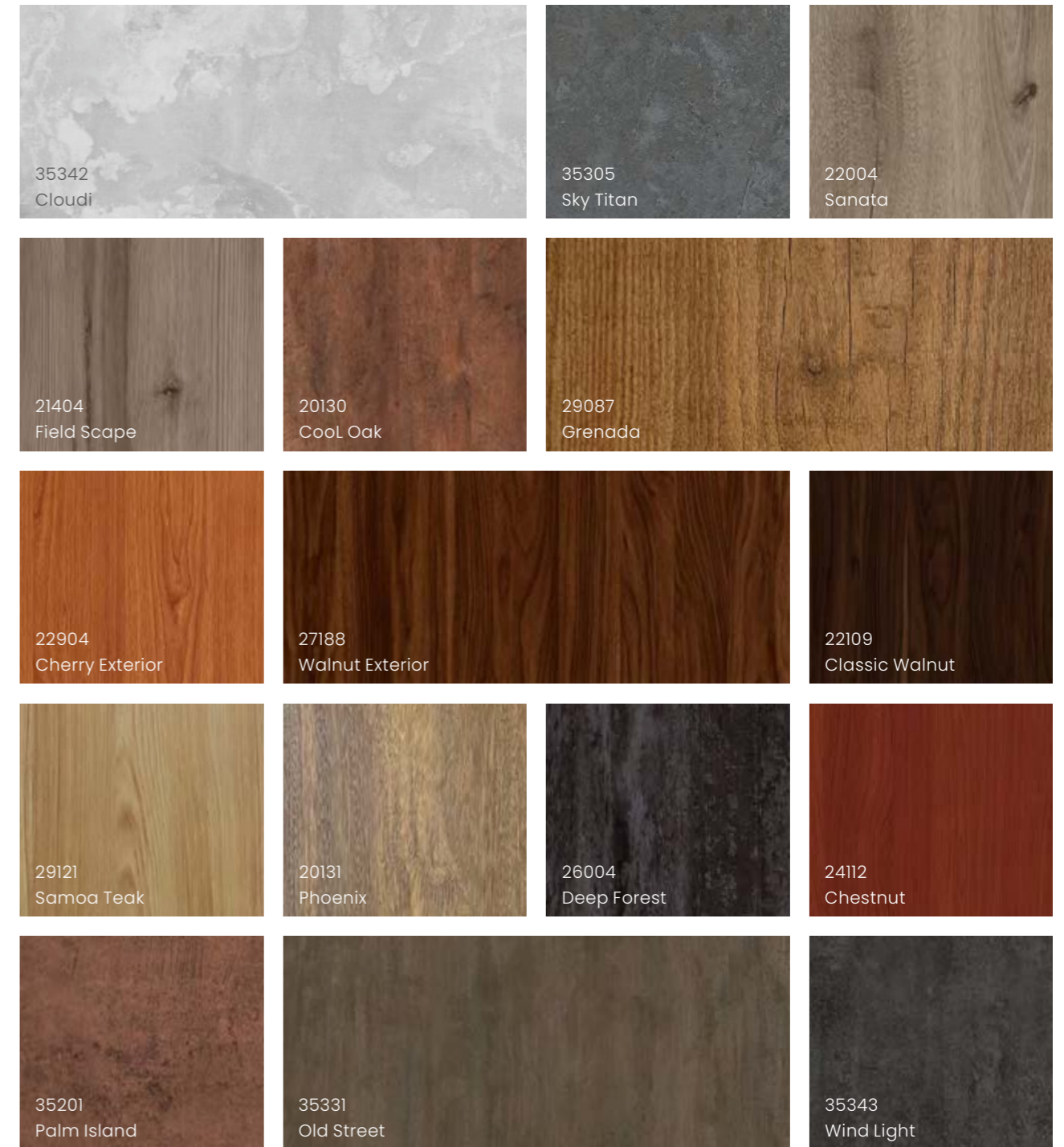
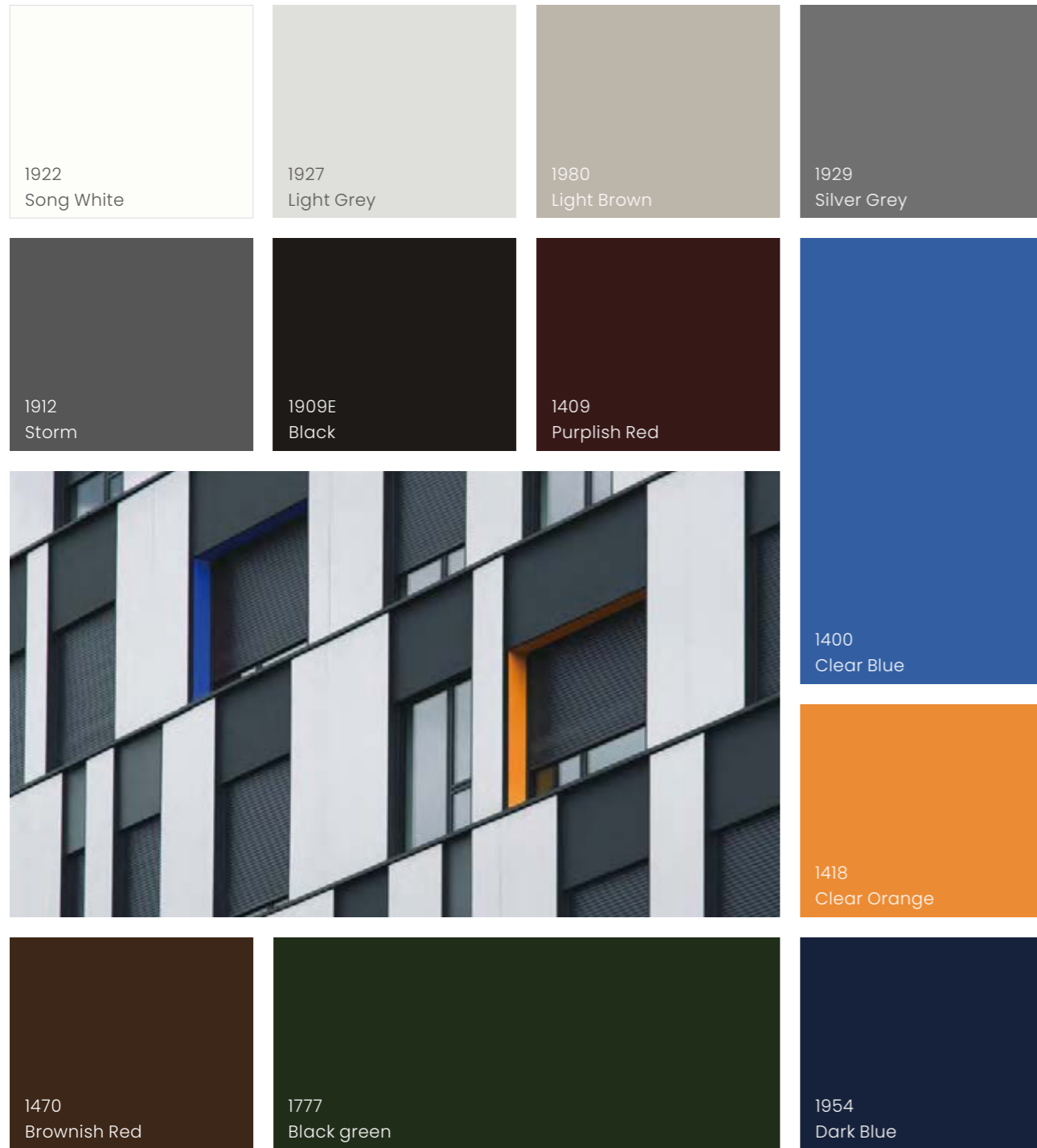
Durable
Sustainable

Exterior Facade

Amusement Facilities | Outdoor Furniture



Design Decor





Collection

DEBO® HUWAI-HPL™ Compact Exterior Nature Wood

DEBO® HUWAI-HPL™ Compact Exterior Nature Wood combines the texture of solid wood veneer with Compact HPL process, made under high temperature and pressure. With the premium UV resistant film, it brings the special touch of solid wood grain and also solves the problems of fading, cracking and mildewing of wood finishes in outdoor environment. DEBO® HUWAI-HPL™ Compact Exterior Nature Wood gives the texture of solid wood to the exterior walls of buildings. Making the building more elegant and attractive.



Anti-UV
Longlasting



Climate
Resistant



Impact
Resistant



Stiring
Surface



Free
Maintenance



Durable
Sustainable

Facade

Column





Nature Wood



DBWNE20



DBWNE01



DBWNE17



DBWNE08



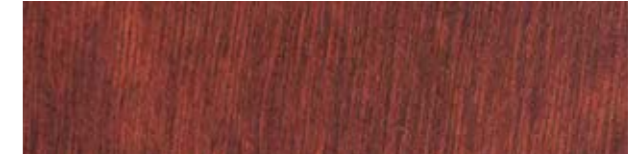
DBWNE09



DBWNE10



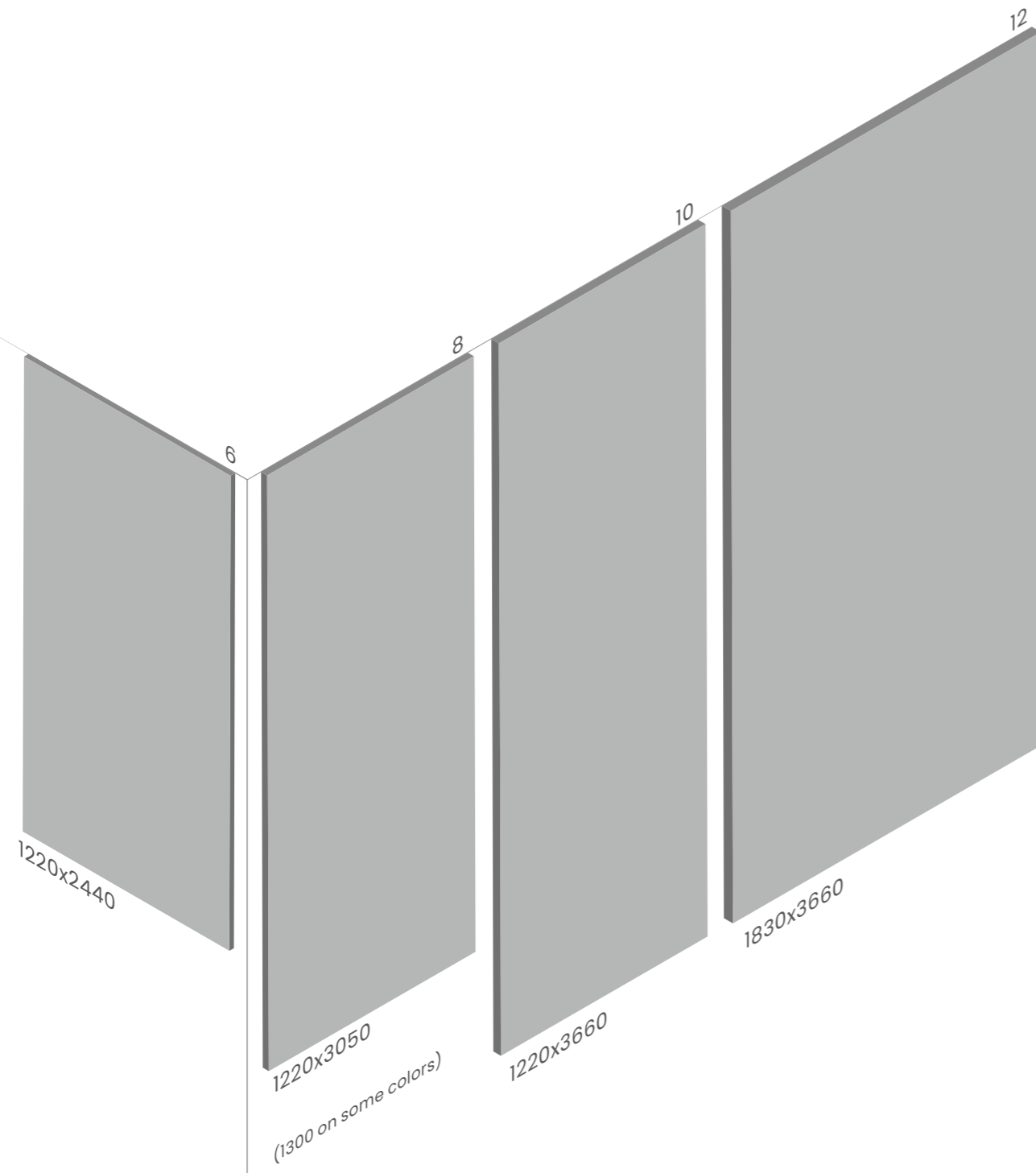
DBWNE02



DBWNE04

Specification

Thickness & Size (mm)



Testing

Properties	Value	Unit	Standard
Specifications, Dimensional Tolerances			
Thickness	$8.0 \leq t < 12.0\text{mm} : \pm 0.50\text{mm}$ between supplier and customer. (T=nominal thickness)	mm(max)	EN 438-2:5
Flatness	≤ 2	mm/m	EN 438-2:9
Length & width	$+ 5 / - 0$	mm/m	EN 438-2:6
Straightness of edges	≤ 1	mm/m	EN 438-2:7
Spots, dirt, similar surface defects	≤ 2	mm^2/m^2	EN 438-2:4
Fibres, hairs & scratches	≤ 20	mm/m^2	EN 438-2:4
Physical Properties			
Density weight	≥ 1350	kg/m^3	ISO 1183
>Thickness 6mm	8,7	kg/m^2	ISO 1183
>Thickness 8mm	11,6	kg/m^2	ISO 1183
>Thickness 10mm	14,5	kg/m^2	ISO 1183
>Thickness 12mm	17,5	kg/m^2	ISO 1183
Material Properties			
Density weight	≥ 1350	kg/m^3	ISO 1183
Flexural strength	≥ 100	Mpa	EN 438
Modulus of elasticity	≥ 10000	Mpa	EN 438
Tensile Strength	≥ 70	Mpa	EN 438
Scratch resistance	≥ 3	Rating	EN 438
Resistance to crazing	≥ 4	Rating	EN 438
Abrasion Testing	1000	cycles	GB/T 7911-2013
Thermal conductivity	0.23	W/mK	EN 438
Resistance to fixings	8mm: ≥ 3000 6mm: ≥ 2000	N	ISO 13894-1
Resistance to impact by large diameter ball Indentation diameter - $6 \leq t$ mm with drop height 1.8 m	≤ 10	mm	EN 438-2:21
Dimensional stability at elevated temperature Cumulative dimensional change	≤ 0.25 ≤ 0.25	Longitudinal % Transversal %	EN 438-2:17
Resistance to climatic shock Flexural strength index (Ds) Flexural modulus index (Dm) Appearance	≥ 0.80 ≥ 0.80 ≥ 4	Index Index Rating	EN 438-2:19 EN 438-2:19 EN 438-2:19 DIN 50018
Resistance to SO₂ Contrast Appearance	≥ 4 ≥ 4	Rating Rating	DIN 50018
Light-fastness and weather resistance			
Artificial weathering	≥ 4	Rating	EN ISO 4892-2 3000h
UV-light resistance	≥ 4	Rating	EN ISO 4892-2 1500h
Fire Classification			
Reaction to fire (on request)	Type FR=12mm Euroclass B-s1,do		EN 13501-1
Release of formaldehyde	Class E1		
Factory Production Control (FPC)	ISO9001, ISO14001, OHSAS18001		